

congratulations you just got your Serene spring arm! Since we are dealing with very strong torque and forces for the spring itself, we want you to read all the instructions carefully before using it. It is very important to follow the instructions, since handling these units in a non-safe manner can cause injuries and broken camera equipment. Following the guide lines will ensure that everything is set up correctly and in a safe way.

Before, you can use the Serene arm, you have to prepare the Easyrig 2.5/3/Vario 400 arm. These instructions show how to prepare a Easyrig standard arm. If you have a medium or long arm, you need to follow the other documentation.

If you feel slightest worried about the procedure, take your arm to a local workshop, that can help you or a rental place that has a service center. However don't be scared since this is a very easy installation, and it gets you to know the ins and out better of the Easyrig as well!

Remove the front cup by using a knife or other sharp object to pry the front cup from the Easyrig arm.



2.. Pull out the cord until you can wire it around the Easyrig arm a couple of times, and then use a clamp to secure it, so the string doesn't want to go back into the Easyrig.



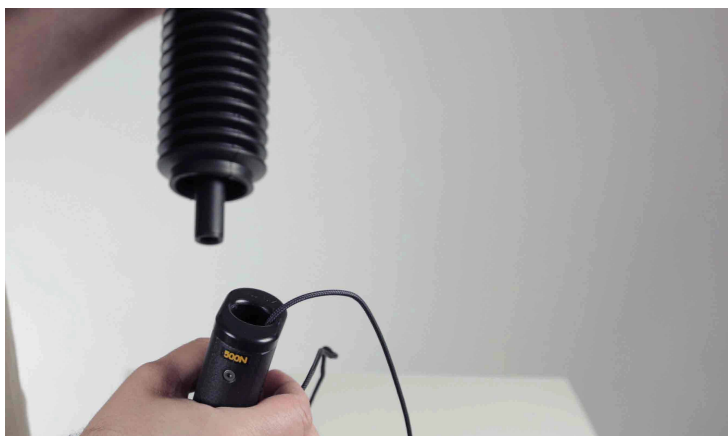
Loosen the plastic cup from the hook, and remove the tape that covers the knot. Untie or cut off the knot, and remove the hook and the cup from the string. We don't need the original Easyrig cord anymore.



4. Grab the cord, and remove the clamp. Slowly release the cord into the Easyrig arm, until you feel there is no more force dragging it inwards, and then let go.



Separate the L-tube from the lower tube that contain the shock absorber.



6. Carefully remove the PEEK ring at the bottom. It will be in the way when you disassemble and when you mount the Serene. You can always glue it back on if you want to if you at any time decide to remove the Serene.



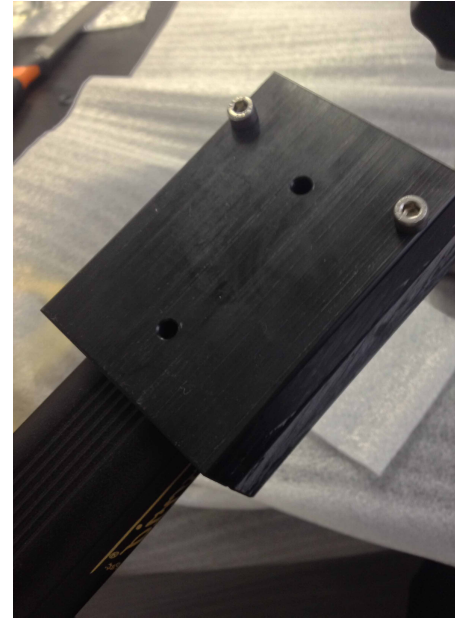
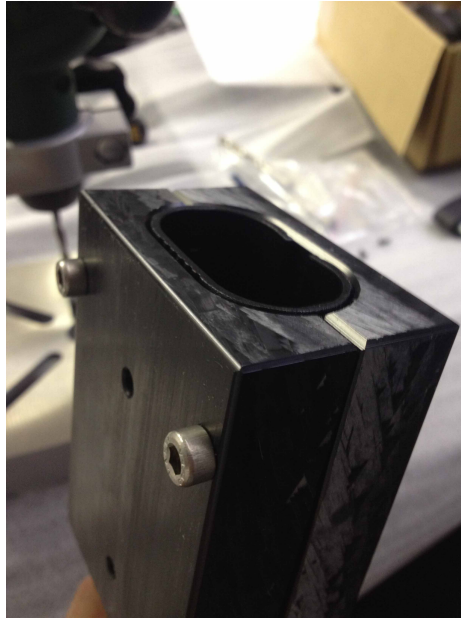
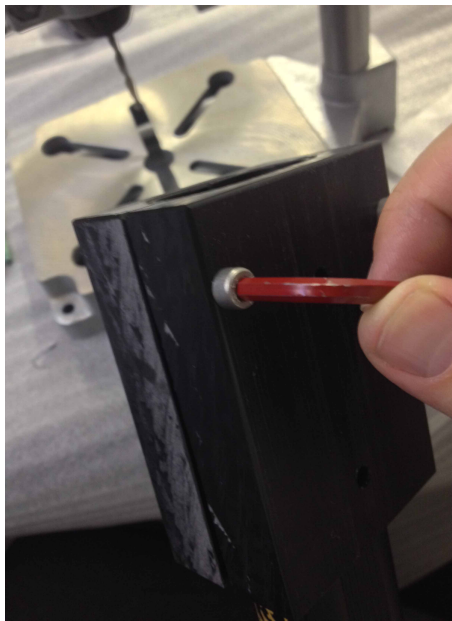
the front pulley. Check if the distance is 36mm as on newer arms. If your pulley distance shows between 37-39mm depending on how old your Easyrig arm is, take your value and write it down for later steps.



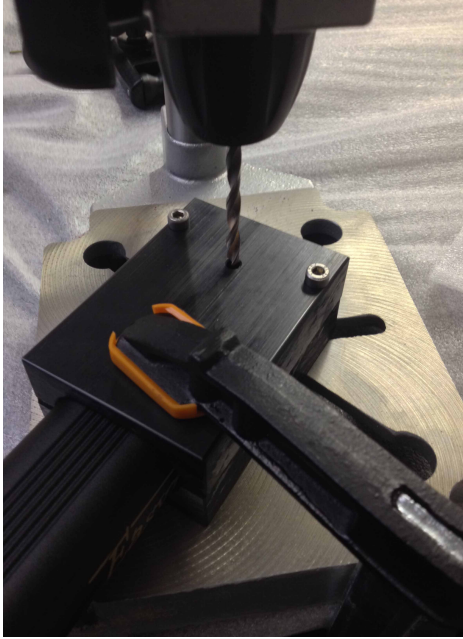
the pulley. Remove it carefully so it doesn't drop into the Easyrig.



Take out the drill stencils and the two supplied M5 allen screws. Place the stencils so they align with the front edge of the Easyrig arm, and the two smaller holes facing upwards. Insert the two M5 screws, and use an Allen tool to tighten it. Very important is to make sure the two M5 holes are facing the front of the Easyrig arm! **NOTE! If your pulley screws aren't the standard 36mm. Please adjust the stencils accordingly. For example if your screws are 38mm from the Easyrig arm edge, instead push the stencils 2mm from the edge before next step.**



1. Fasten the Easyrig arm securely preferably on a table top drill and secure the stencil in place. Use a 5mm (0.2") diameter drill, and drill in the centre, until your just rough. **NOTE ! Standard arm users only use the front hole!**



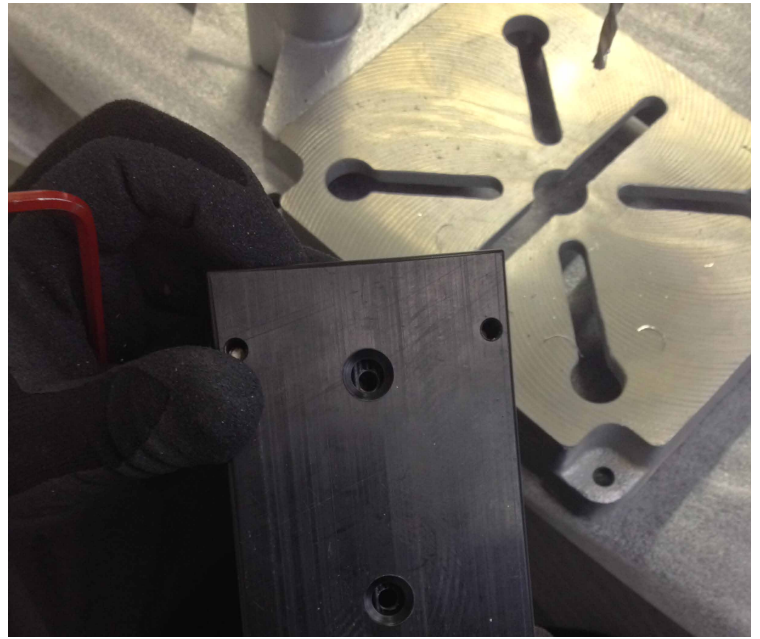
2. Finish off with a 12mm (0.47") diameter drill in the outer guides. Remember to take it slowly and remove plastic spill from the guide, and gradually go downwards when using the final 12mm size.



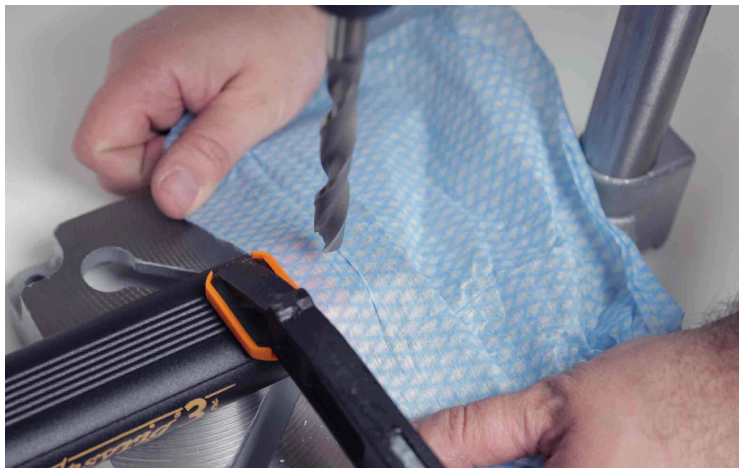
4. If needed, trim down any leftover spill carefully with a file, making sure everything is nice and smooth!



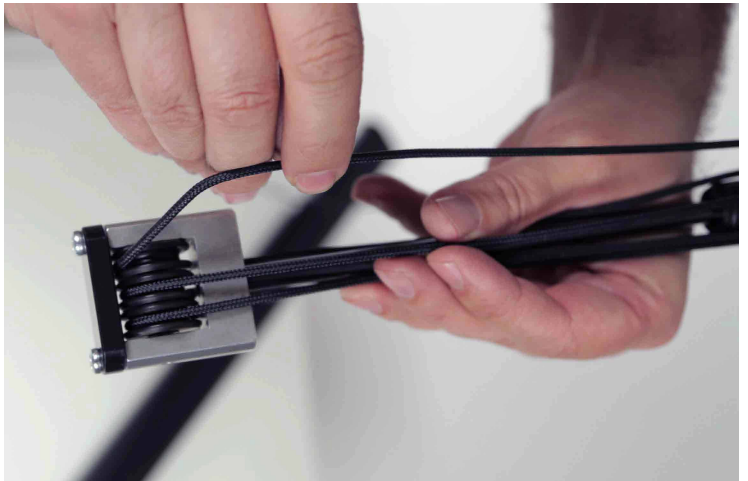
11. After you've created the 5mm (0.2") diameter hole, loosen up the M5 screws on the drill stencil, and remove the stencil from the Easyrig arm. Rotate it 180 degrees so the larger holes are facing you and push the stencil back again on the Easyrig arm and tighten the M5s again. Be sure to align everything. Replace the drill with a 8mm (0.315") diameter one, and slowly drill a larger hole straight over the first one.



13. In order to clear the hole from any unwanted sharp aluminium bits, you can use a thin piece of cloth over the hole, and drill it again with the 12mm diameter drill. This will sand down the now exposed aluminium edges, and make the hole smoother.



15. Now replace the cord, with the provided longer one. Be sure to follow Easyrig tutorial how to re-string the cord at: <http://vimeo.com/83685316>
NOTE! You must match the absorber strength in the same way you would do without the Serene, matching camera setup weight!



8. Pull the string out on the bottom, then attach the pulley back into the Easyrig, and secure it with the two screws simultaneously.



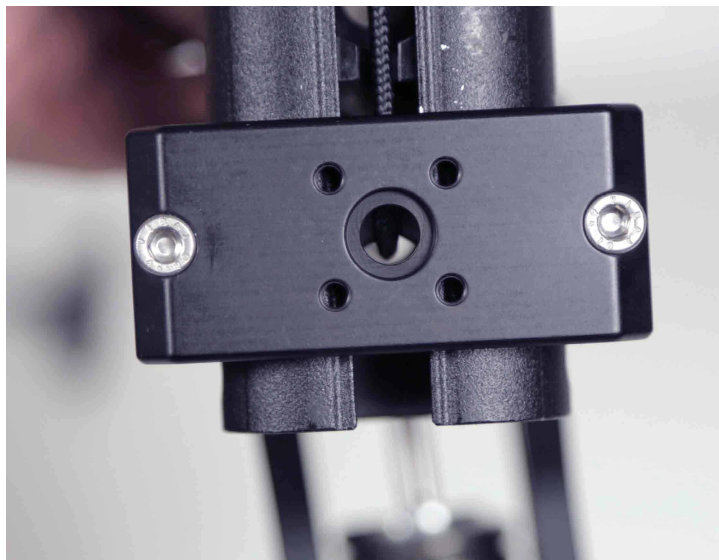
8. While pulling the string a little against you, secure the two M5 screws on the bottom. Make sure the brackets are exactly behind the two screw holes at the front!



17. Open up the two brackets on the Serene arm, by unscrewing the two M5 screws at the bottom. Push the cord through the upper front hole of the Easyrig arm, and into the hole on the upper of the two brackets, so it comes out on the other side.



19. Looking from the below, make sure that the cord is going exactly in the center up into the hole of the Serene arm. If you have a medium arm, you can slightly reposition the Easyrig slider, if the pulley isn't exactly centered.



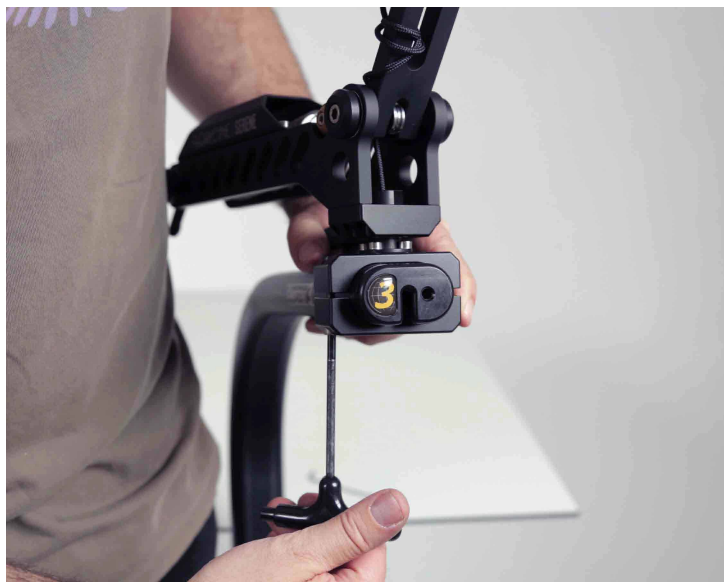
20. Seen from the front, you should clearly see the cord going into the Serene in the centre if you pull the cord so its tightened.



21. Put back the front cap, either by screwing the two screws if you got a medium arm, or just push in the front cap if you got a standard Easyrig arm.



22. Tighten the two M5 screws properly, to secure that the Serene is properly tensioned. No need to overdo it though! The Easyrig arm is relatively thin, and can get deformed if you go into "extreme hulk mode".



23. Pull the cord around the first pulley, on the Serene, and then pull it hard to extend it at its maximum. Put back the Easyrig hook, right before the second orange pulley, and tie the knot there. The knot should be about aligned with the front pulley after tightened.



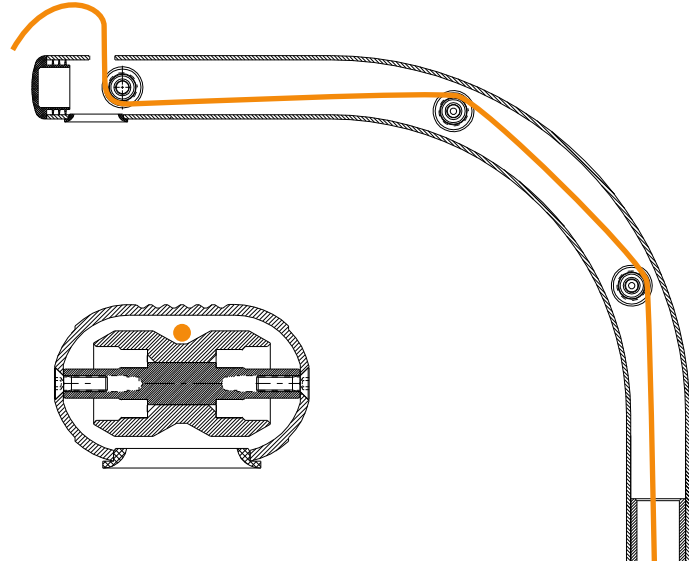
24. Remove the small m3 secure screw in the front, and pull the hook over the pulley on the underside of the spring arm. The cord should pull the hook against the absorber. If everything feels correct and you can feel the tension from the absorber, you can now cut away extra cord if it's too much to fit inside the plastic cap and seal the end with a lighter.



25. Adjust the tension on the spring with the kipp lever at the back. Now you're ready for your first experience with the Serene arm!



ivied by all the others on set ;)) adjust the tension properly, put on your camera, and adjust the kipp, until the m is just above horizon level! The Serene arm is shipped with a light spring stalled and is tensioned to about 8-10kg strength.



. The Serene has two springs. One heavy duty for weights between 14kg and 20kg and one light spring for between 6kg and 14kg. To change springs, remove the protection cover with the four M4 allen screws. Unwind the kipp lever, so the long M6 screw is going out of the spring plug. Hold the spring while doing this so it doesn't fall and damage anything. Then simply unwind the spring from the black cylinder that is connected to the spring. Hold firmly under this black cylinder on the two long M4 screws, so they don't get bent while unwinding it. Then put the other spring in place. You can use some non-permanent loctite on this M6 so the spring doesn't unwind itself when tightening the spring later on in the back. The light spring already is shipped with some loctite on the M6 screw. There will be a video tutorial on how to change springs on the website very soon.

. Note of caution!

ase check so spring always is attached to the front and doesn't unscrew itself, when adjusting the kipp lever in the back. If it does, please add a little non-permanent Loctite to the front screw while putting on the spring.

ase check if the plugs on the spring start to unscrew themselves when adjusting the kipp lever. Please let us know if that ever happens!

e spring should ALWAYS be under some pretension, unless you're changing springs. Tension it at least 10mm (so you can visibly see some gap between all coils on the spring) before you do anything.

ways release the Easyrig hook, gently close to the arm. If you let it go from far below, it might go up and over the pulley in the front.

sure the Easyrig cord is routed like the illustration above. If the cord isn't in the center on each pulley, it will create friction, and the string will stutter. The cord also has to go over the first two pulleys (closest to the absorber) and under the last one closest to the front, otherwise the cord will scratch the Easyrig arm, and sooner or later snap off!

careful when you take on/off your Easyrig! The Serene arm has some extra length you aren't used to, and since the arm swivels it comes with quite a force if you bend it inward. We don't want any injuries on set! So better ask for some help, than doing everything on your own! Use the shock cord at the back on the Serene arm to avoid the Serene arm swinging around.

Don't forget that the absorber in your Easyrig must match the weight of your camera+gimbal setup.