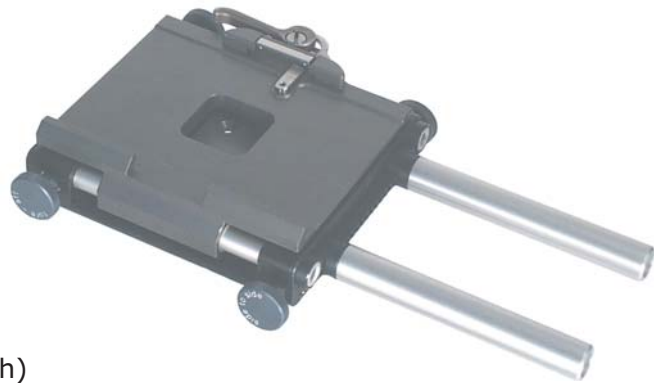


**Stage** Stage - camera mounting platform with universal dovetailplate  
**Stage/** Stage - camera mounting platform

Auto quick lock safety mechanism



Self locking fore/aft - side-to-side fine adjustment (both sides)  
15 mm rods to mount accessories  
Built-in reference bubble level  
Lightweight but strong and steady  
No vibrating picture at running shots  
Motorized platform optional  
Fits on all existing rig's



weight: 590 gramm (1.3 lbs)

Fore / Aft travel: 2.8 cm (1.1 inch)

Side-to-Side travel: 2,2 cm (0.87 inch)

Size (without front rods): 13 x 12 x 3,5 cm (5.1 x 4.7 x 1.4 inch)

Unlocked stage



Locked stage for rough camera balance adjustment via dovetail plate



Locked stage with fixed dovetail plate for camera fine balance adjustment



**Arm - vest - monitors - other accessories and battery systems, see current list.**